

YTL HOTELS

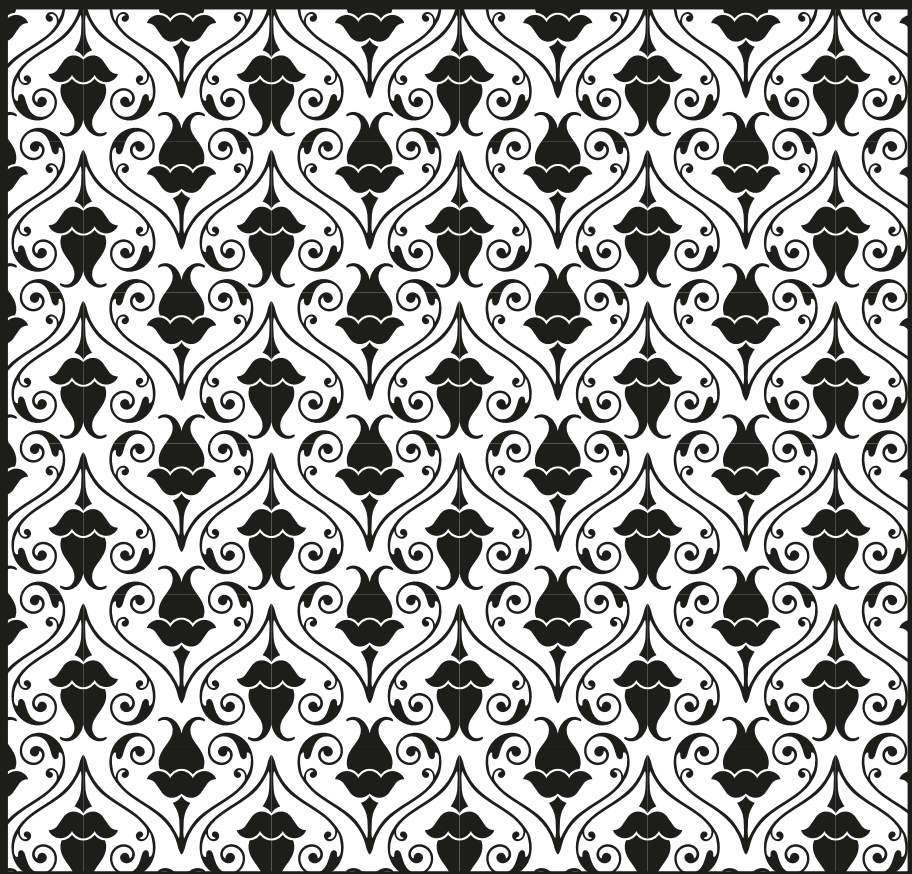
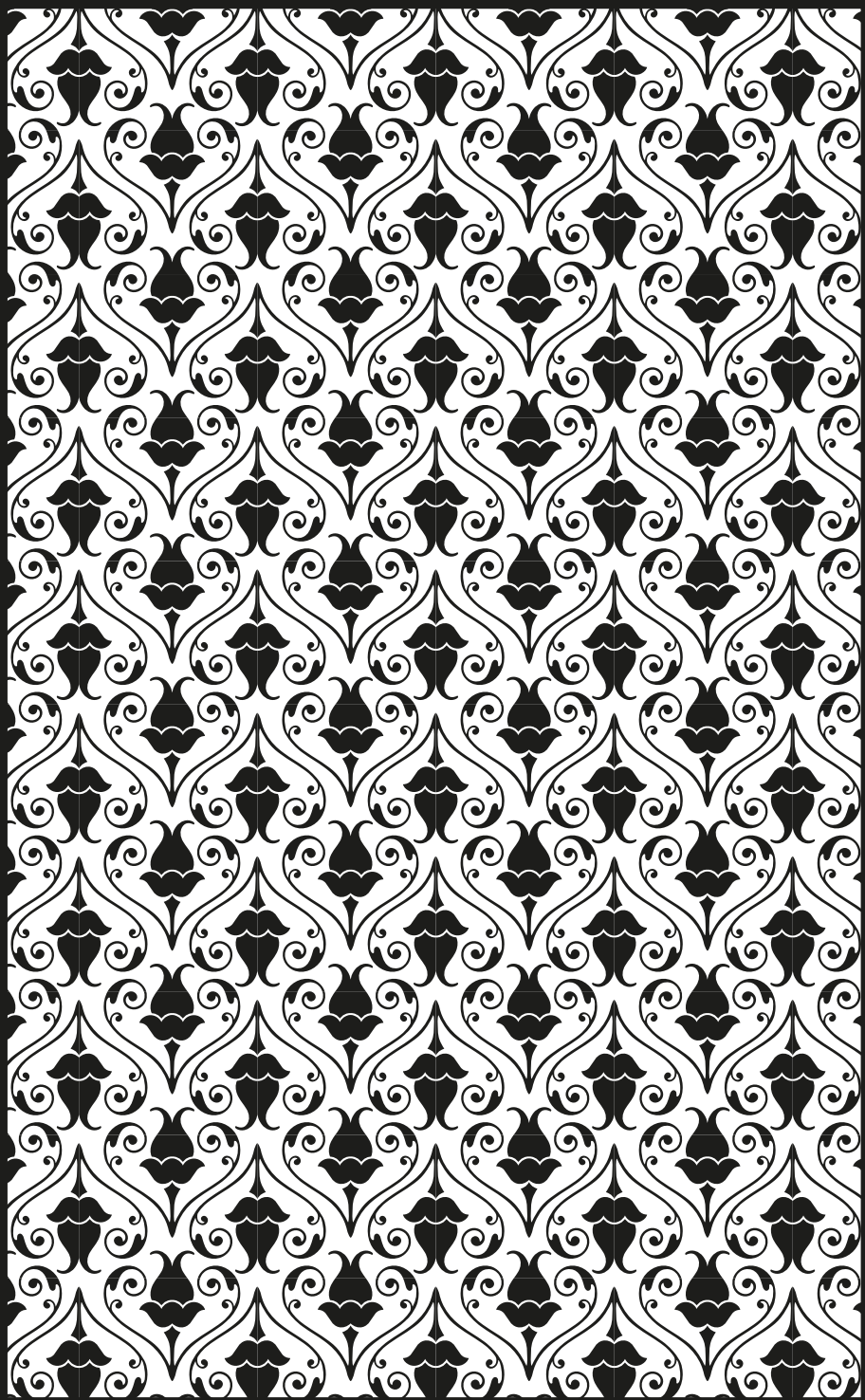
Reserved Places, Reserved Moments.

LEADING HOTELS

The Majestic Hotel Kuala Lumpur
5 Jalan Sultan Hisshamuddin, 50000 Kuala Lumpur, Malaysia
Telephone (603)2785 8000 Facsimile (603)2785 8080 Email tmklresv@ytlhotels.com.my
www.majestickl.com

THE MAJESTIC SPA

by SPA VILLAGE



Spa Recommendations and Guidelines

Enjoy a full range of amenities when visiting The Majestic Spa including slippers, private locker, bathrobes and vanity products.

Services that are listed with a * symbol are considered heat treatments and are not recommended for guests that have heart conditions, suffer heat sensitivity, or are pregnant.

In consideration of other guests we ask that all cellular phones be turned off while at the spa. The Majestic Spa is a non-smoking facility.

OPERATION HOURS

Spa Facilities: 10.00am – 10.00pm

Treatments: 10.00am – 9.00pm

RESERVATIONS

Advance reservations are recommended. If in-house, touch **7072/7073** between 9.00am and 10.00pm.

You may also call The Majestic Spa at **(+603) 2785 8070** or email **mspa@ytlhotels.com.my**.

CHECK-IN

Please check-in at the Spa Reception Desk 30 minutes prior to your first appointment. We regret that late arrivals will not receive an extension of scheduled treatments.

FACILITY USAGE

All guests of The Majestic Spa enjoy complimentary use of the spa facilities with any 90-minute Deluxe scheduled spa service. All prices are subject to change without prior notification.

AGE RECOMMENDED

The Majestic Spa is appropriate for guests 16 years and above.

SPA BOUTIQUE

Be sure to visit our Spa Boutique for an array of Spa products.

CANCELLATION POLICY

As a courtesy to other guests and our therapists, please give us 4 hours' notice if you must cancel or change any treatments. Without this notification you will be charged in full.

GRATUITIES

In appreciation of outstanding service, gratuities may be given at your discretion.

Menu priced in Ringgit Malaysia, inclusive of 6% GST

Distinctively appointed in the art nouveau style of Charles Rennie Mackintosh's famous Willow Tearooms, The Majestic Spa offers something different. Turn of the century England was not only a period of social grace and tradition, but also of progress and change. The Willow Tearooms of Scotland became iconic gathering places for businessmen to meet, read the paper or discuss politics and an elegant environment for proper ladies to lunch, play cards and socialise. Serving as home to many British expatriates, British Malaya also embodied the feeling of this transitional time. Although longing for the comforts of their home, these "strangers in a strange land" adapted to all things new and exotic, finding the experience both fascinating and daunting. True to the spirit of this time, The Majestic Spa reflects upon a golden era in Malaysian history.



EXPERIENCES

MALAYA GOLDEN CHERSONESE

2.5 Hrs Double RM1,750 / Single RM875

Our couples experience celebrates the epic journey of Isabella Lucy Bird in British Malaya and her bold passion for adventure. One of the most influential female explorers and writers of her time, this intrepid Englishwoman spent most of her childhood very sickly. She grew to dread the conformities of domestic life in England. So upon the suggestion of her doctor and with 100 pounds in her pocket, Isabella commenced a journey that in a lifetime saw her circumvent the globe three times over. Her time spent in British Malaya is famously chronicled in "The Golden Chersonese" – the ancient name of the Malay Peninsula. Ms. Bird's evocative account of Malaya ignites the imagination of an exotic and exquisite land. Brilliantly plumed birds, delectable fruits, and heavenly fragrant flowers were the subject of detailed study, as she marveled over the richness and plentitude of natural beauty found here in Malaysia.

For Her:

- Banana Honey Hair Masque
- Papaya Coconut Scrub
- Lime Blossom Bath
- Bunga Rampai Massage

For Him:

- Banana Honey Hair Masque
- Malaya Herbs Scrub
- Herbal Steam *
- East Indian Spice Massage

FACIALS

The Majestic Spa is proud to feature Kerstin Florian skin care. Developed by Swedish born Kerstin Florian, this luxury collection of products sources only the finest and most potent ingredients from around the world, artfully blending science and nature, and instantly earning its reputation as an effective, indulgent and result oriented skin care line.

CELLULAR FIRING FACIAL

90 Mins RM645

A truly decadent yet effective treatment, this facial is designed to reduce the visible signs of aging. A spirulina algae masque packed with protein, vitamins and minerals is utilised to improve the skin texture. Coupled with the specialised Chitosan masque to promote elasticity, these two powerful ingredients combat hyperpigmentation, smoothing fine lines and leaving tired skin with a healthy glow. Includes hand and lower leg massage.

DEEP CLEANSING PURE FACIAL

90 Mins RM525

Restore balance and clarity to oily or blemished skin. A deep pore- cleansing massage promotes circulation to detoxify congested and stressed skin, preparing for a focus on hand extractions of impurities. This facial helps control excessive oil production for a more even skin tone and clear radiance.

CLASSIC EUROPEAN FACIAL

60 Mins RM410

Our skin care specialists will custom design this facial for your specific needs. This classic treatment includes cleansing, exfoliation, masque, massage and moisturising treatment.



A LA CARTE MASSAGE

Treat yourself to one of our deluxe Majestic massages. Each 90 minute session includes the Gifts from the Garden foot scrub and Rosemary scalp treatment.

SWEDISH

90 Mins RM410

This classic Western oil massage works predominantly with the muscles, soft tissues and joints, utilising long, rhythmic strokes. Please request light, medium or deep pressure.

AROMA

90 mins RM410

The powerful effects of aroma on the body and mind, combined with a technique designed to elicit a feeling of profound relaxation, make this massage an ideal choice for anyone who wishes to reduce stress. To ensure quality and achieve the desired effects, we have produced our own blends of aromatherapy oils.

MALAYA

90 Mins RM410

The art of traditional Malay massage is passed on from generation to generation. The technique consists of long kneading strokes that focus on the muscles and pressure applied to various points on the body. This treatment uses our signature Bunga Rampai oil for her or East Indian Spice oils for him.

HERBAL SPORTS *

2 Hrs RM645

Strengthen your body and receive the revitalising effects of this herbal poultice treatment. Our therapeutic herbal blend of rosemary, thyme, mint, lavender and rose are steamed and applied to the body to reduce muscular aches and pains. Combined with firm kneading massage and stretching, this experience is not to be missed.

QUEEN VICTORIA'S LAVENDER

3 Hrs RM995

English lavender is one of the most coveted and treasured fragrances in the world. Known for its fresh scent and soothing anti-bacterial properties, lavender gained overwhelming popularity during the reign of Queen Victoria of England. Her enthusiastic passion for this versatile herb was so strong, that it became a requirement for all of the royal palaces. It was not only widely used by master perfumers but also used to stuff mattresses and pillows, and extravagantly strewn on floors to release its fragrance under foot traffic. Because of this royal blessing, lavender was extremely fashionable among English ladies of the time. Young maidens even placed small sachets between their breasts to attract suitors! Contemporary scientists however, have found the potent herb to have a direct effect in calming the nervous system and lavender is more modernly used to help regulate sleep and reduce stress. This experience is a perfect choice for those seeking deep relaxation.

- Tranquility Breathing Ritual
- Harmonising Exfoliation
- Curative Lavender and Aloe Gel Mask
- "Drift Away" Lavender Massage



ENGLISH AFTERNOON TEA

2 Hrs RM820

The quintessential tradition of afternoon tea is honoured in this experience. Anna, Duchess of Bedford, is said to have created the idea of afternoon tea, having complained of suffering “that sinking feeling” between breakfast and dinner. She began taking a pot of tea and a light snack in her boudoir at Woburn Abbey. Later, after returning to London, invitation cards were sent to her friends to join her for snacks, tea and walks in the fields. Social hostesses picked up on this practice and before long all of fashionable society was sipping tea and nibbling cakes and berries in the middle of the afternoon. We begin our English Afternoon with an antioxidant berries and moisture rich cream scrub followed by the sweet smell of a garden berries oil massage and brilliantly topped off with a fragrant English rose natural facial.

- Blackberries and Cream Scrub
- Garden Berries Massage
- English Rose Natural Facial

* Chamomile soothing bath upgrade available.

NORTH COAST SEAWEED SCULPT *

2.5 Hrs RM875

This highly effective treatment naturally firms and lifts skin, reduces cellulite and aids in water retention, utilising the powerful properties of seaweed. Rich in essential minerals and nourishing polysaccharides, some of the world's finest seaweed is harvested from the cold water coasts of Ireland and northern Britain and has been used for hundreds of years to treat an array of ailments from arthritis to skin conditions. We begin with a gentle dry brushing of the skin to stimulate lymph and blood circulation in stubborn areas that tend to collect fat. A mineral rich seaweed mask is then applied to your entire body oxygenating and nourishing the tissue to reduce the appearance of cellulite. We complement this detoxifying experience with a gentle lymphatic drainage massage to eliminate newly released cellular toxins.

- Dry Brushing
- Seaweed Wrap
- Lymphatic Drainage Massage

